

e-STUDIO307LP
e-STUDIORD301



World's first MFP with erasable toner
Reduce paper usage by up to 80%
Unique technology
Reduce carbon emissions



Ecology - Efficiency - Economy

TOSHIBA
Leading Innovation >>>

TOGETHER
INFORMATION

Changing the way you print

Introducing the new Toshiba e-STUDIO307LP, a revolutionary design in our award winning MFP line-up. It is the first MFP to incorporate a unique erasable toner enabling the output to be erased and re-used multiple times.

Instead of discarding prints which are no longer required, now you can erase and re-use each sheet of paper up to five times.

That's good for you and the environment!



Print

Print and copy with erasable toner

Print Scan Copy Fax



Scan

Digitise documents for electronic archiving



Erase

Erase the print to allow re-use of paper

Sort

Sort paper into reusable and non-reusable

Scan Erase Sort

Re-use

The office revolution

Toshiba now allows you to re-use your paper, delivering a far better value for money ratio.

Optimising the use of your resources is an effective way to increase profitability. For example, by using the same sheet of paper five times with the e-STUDIO307LP/RD301, you reduce your paper consumption by 80% without reducing your overall print quantity.

Lets break that down, assuming you print 4,000 pages per month, this means that after five years you will have saved 192,000 sheets of paper. In other words: the same amount of paper which you would usually use in one year, could now last five years!



Paperless vs less paper

The notion of a paperless office was first discussed over 30 years ago, yet today we still print billions of pages each year. According to an IDC study¹⁾ two million A4 pages are printed every minute in the EMEA region (Europe, Middle East and Africa) alone. That amounts to almost three billion pages per day!

Without needing to be filed, many pages are simply thrown away. With the e-STUDIO307LP/RD301 Toshiba now allows you to reuse your paper, so on average each sheet can be used up to five times. This could significantly change the impact your office has on the environment.

So even if the time for paperless offices isn't quite here, you can now reduce your paper usage without having to print less.

¹⁾ IDC. Worldwide Page Volume and Vendor Share Program, October 2012.

The Toshiba Paper Reusing Device e-STUDIORD301 is capable of de-colourising the text and images printed on documents with the e-STUDIO307LP thus allowing you to use the paper again.¹⁾ This can significantly reduce your paper consumption. As a result, you'll be saving valuable resources whilst contributing to a greener tomorrow.



¹⁾ As latent toner remains on the paper after erasing, it is not recommended to print confidential documents on this system.

Re-use before recycling

Reduce - Re-use - Recycle. These 3Rs form the basis of environmental awareness. The e-STUDIO307LP/RD301 now fills the gap by making the re-use of paper possible.

Most of our natural resources are limited so it makes sense to use them as efficiently as possible.

Trees are a renewable resource, but it takes many to make paper. The paper production process also involves the use of water, a natural resource vital for all life on the planet but increasingly becoming a scarce commodity in certain parts of the world.

Over the past few years the process of making paper has improved and become more environmentally friendly.

Decades of innovations have resulted in resources being used to their fullest extent. Additionally, recycling paper has helped save resources. Toshiba now adds a new level to the environmentally conscious use of paper: the ability to re-use before recycling.

By using paper five times over before recycling, it is possible to save 80% of natural resources otherwise needed to print the same volume.



THE **ECO-MFP** FORMULA

Toshiba's unique eco-MFP cannot only print, copy, scan and fax but it also erases each page up to five times.

Reduce your paper consumption by up to 80% with regular office paper.



e-STUDIO307LP

e-STUDIO RD301

Integrated into your fleet

The e-STUDIO307LP is more than just a green MFP. Its advanced technology is based on Toshiba's e-BRIDGE controller to ensure flexible connectivity with diverse applications and workflows.

Functionality

The e-STUDIO307LP offers you full functionality. Monochrome printing and copying with special blue toner as well as a colour scan function come standard. And if desired, you can extend the systems functionality by adding a fax option.

Productivity

With a paper capacity of 2,300 sheets, the e-STUDIO307LP is ready to handle large print jobs. This means you can make full use of the 30 pages per minute print speed without refilling the paper supply.

The system can also scan in crisp colour with a resolution of up to 600 dpi. For faster results, it also scans at 300 dpi in monochrome reaching up to 57 scans per minute.

Usability

Ease of use is vital if you want to be effective. That's why all Toshiba products are designed with the customer's needs in mind. Ensuring smooth workflow is just a few clicks away, the intuitive 9" (22.8 cm) LCD touch panel gives access to all functions on the e-STUDIO307LP.

Connectivity

Thanks to Toshiba's e-BRIDGE controller, the e-STUDIO307LP can easily form part of your modern workflow.

A large choice of optional plug-ins, connectors and a fleet management tool allow you to easily customise the system according to your needs and existing workflows.

e-BRIDGE Technology

Toshiba's e-BRIDGE technology lies at the high-tech core of almost all e-STUDIO systems. It is the functional foundation for fast document processing and can combine with highly productive applications.

This technology enables you to take advantage of Toshiba's Universal Printer Driver and enjoy the intuitive interface used on all e-BRIDGE-based devices. It also allows simple yet effective administration and service of your entire Toshiba fleet.



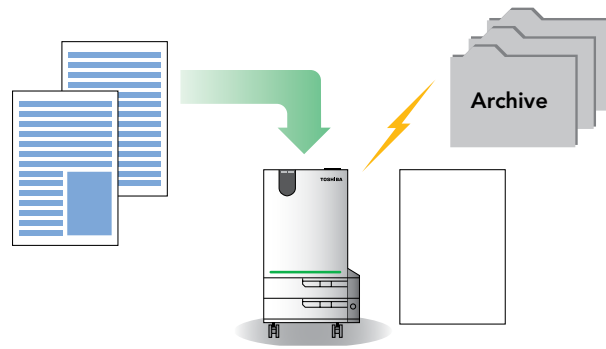
Save and erase

The e-STUDIORD301 fully integrates into your digital workflow. It is capable of electronically archiving the content of your documents before erasing it.

The e-STUDIORD301 can do more than just de-colourise paper. It is capable of converting your documents into electronic files and saving them for you.

Equipped with a single pass duplex scanner the system ensures fast conversion into JPG, TIFF or PDF format. These files are then stored on your server and become part of your digital archive, giving you access to the content at any time.

Once the document has been digitised, the content of the sheet is erased. To achieve this, the special toner on the paper is de-colourised by applying heat.



As a consequence, the toner turns from blue to transparent, thus virtually erasing everything that was printed.

Automatically, the erased sheet is scanned yet again and sorted into reusable and non-reusable paper, then placed into the respective output cassette for collection.

This entire process - archiving, erasing and sorting - is completed within just a few seconds. So with the new e-STUDIO^{307LP}/RD301 in your fleet, being environmentally conscious will not reduce your productivity.

Permanent and non-permanent documents

Some documents just have to be filed and kept, like when there are legal obligations compelling you to do so. These are permanent documents, printed with the intention to be kept long-term.

But very often, we print documents even though we know we won't need them for long. Eventually, as can be expected, we throw them away. Sometimes we even print documents knowing very well we will throw them away within a few minutes or hours. Just think of all the documents you print just as a reminder to do something or those you print to proof-read before sending. For these non-permanent documents, the e-STUDIO^{307LP}/RD301 is the perfect solution. Simply re-use the the same sheet of paper for your next non-permanent print job. Over and over again.

For a greener tomorrow

Efforts to reduce carbon emission are being made on a global level. With the possibility to re-use paper when printing, the e-STUDIO307LP/RD301 helps achieve this goal.

Greenhouse gases have a huge impact on the global climate and efforts to reduce the CO₂e emission are being made all over the world.

Over the entire life cycle of an MFP, it is the paper - not the manufacturing, transport or usage - which accounts for largest part of the CO₂e emission. This is due to the fact that when producing one tonne of paper, approximately one tonne of CO₂e is emitted.¹⁾

As the e-STUDIO301 is capable of erasing text and images from documents printed on the e-STUDIO307LP, it allows you to reuse the paper. If you use the same sheet five times, you reduce your paper consumption by 80%. This of course also significantly reduces the CO₂e emission and helps protect the environment.



Technically Speaking

CO₂ vs. CO₂e

Carbon dioxide (CO₂) is one of the most prevalent greenhouse gasses and has become a proxy when measuring greenhouse gas emissions. However, it is only one of many greenhouse gases. Others include water vapour, methane, nitrous oxide and ozone.

To take into account the emission of these other greenhouse gases, an equivalent measure has been devised by scientists: the CO₂e (carbon dioxide equivalent). It allows other greenhouse gases to be expressed in terms of CO₂.

The calculation is based on the relative global warming potential (GWP) of the different greenhouse gases. With CO₂ having a GWP of 1, methane (CH₄), for example, has a GWP of approximately 25. Therefore, the emission of one tonne of CH₄ is equivalent to emitting 25 tonnes of CO₂.

So by using the CO₂e, a far more accurate greenhouse gas emission can be measured, giving you a more precise picture of the effects of these emissions.

¹⁾ Defra. Guidelines to Defra /DECC's GHG Conversion Factors for Company Reporting. 2011, p. 40.

GENERAL

Copying Process/Type	Erasable Dry Process/Laser Technology
Original Reading Method	CCD Line Sensor
Copy/Print Resolution	2400 x 600 dpi (with Smoothing)
Copy/Print Speed	30 PPM
Scanning	Colour Scanning
Warm-Up Time	Approx. 65 Seconds
First Copy Time	Less than 4.9 Seconds
Multiple Copying	Up to 999 Copies
Standard Paper Supply	2 x 550-Sheet, 100-Sheet Stack Feed Bypass
Maximum Paper Supply	Up to 2,300 Sheets
Acceptable Paper Size	Cassette: A5-R to A3 (64-80g/m2) Bypass: A5-R to A3 (64-80g/m2)
Memory	2GB RAM, 320 GB Self-Encrypting HDD
Reduction/Enlargement	25% to 200%
Control Panel	9" Wide VGA Colour Touch-Screen
Dimensions	Approx. (W x D x H) 575 mm x 586 mm x 756 mm
Weight	Approx. 55kg
Power Consumption	Max 1.5kW, Less than 1.0W Super Sleep Mode (220 – 240V)

PRINTING FUNCTIONS

PDL Support	PCL5e, PCL6, PostScript3, XPS, PDF
Supported OS	Windows Vista/7/8, Windows Server 2003/2008/2012 Mac X OS10.5.7/10.6.8/10.7/10.8; UNIX (SUN Solaris v2.6/2.7/7.8/8/9/10, HP-UX v10.2/11x, IBM AIX 4.3.3), Linux, SCO, 64bit OS, CUPS
Network Protocols	IPX/SPX, TCP/IP (IPv4/IPv6), Ether Talk, NetBIOS over TCP/IP
Printing Protocols	Windows Printing (SMB), LPR/LPD, IPP w/Authentication, Netware, Apple Talk PAP, Ether Talk, Port 9100 (bi-directional), WS Print, FTP
Print Drivers	Universal, Postscript 3, XPS
Interface	Standard: Ethernet 10/100/1000BaseT, USB 2.0, Option: IEEE802.11b/g (Wireless LAN module)

SCANNING FUNCTIONS

Scan Speed (A4)	57spm @300dpi (B&W)/43spm @300dpi (Colour)
Scan Mode	B&W, Grayscale, Colour/ACS
Scan Resolution	100 dpi, 150 dpi, 200 dpi, 300 dpi, 400 dpi, 600 dpi
File Format	B&W:TIFF, PDF, XPS, Grayscale/Colour: JPEG, TIFF, PDF, Slim PDF, XPS, ACS: TIFF, PDF, XPS, MS Word, MS Excel, Searchable PDF w/Adv. Scanning option

ELECTRONIC FILING FUNCTIONS

Operation Method	Colour Touch Screen Control Panel or Client PC
Number of Boxes	1 Public Box; 200 Private User Boxes
Capacity of Boxes	100 Folders per Box; 400 Documents per Box/Folder; 200 Pages per Documents
Input to Box (Multi agent)	Copy & Box, Print & Box, Received Fax / i-fax to File & Box, Received fax / i-fax to email & Box, Received fax/i-fax to fax/i-fax relay & Box, Fax to mailbox & Box, Scan to File & Box, Scan to email & Box
Output from Box	Box to Print, Box to email (destination type: To, CC: BCC:)
Box N/W Access	TWAIN Driver, File Downloader

INTERNET-FAX/NETWORK-FAX FUNCTIONS

Compatibility	ITU-T.37 (Simple Mode)
Drivers	Windows Vista SP2/7/8, Windows Server 2003/2008/2012, Mac OS 10.4 or later

NETWORK/DEVICE MANAGEMENT UTILITY

•TopAccess •TopAccess DocMn •Address Book Viewer •e-BRIDGE Fleet Management System (Opt.)

OPTIONS

Facsimile Unit GD1350	Super G3, G3
Compatibility	MH / MR / MMR / JBIG
Data Compression	Approx. 3 Seconds per Page
Transmission Speed	Max. 33.6 Kbps
Fax Modem Speed	Transmission and Reception 1GB (HDD); Backup Permanent (HDD)
Fax Memory	100 Jobs, 2,000 Destinations Max; 400 Destinations/Job, Max. 1000 pages/file
Memory Transmission	0.7 Seconds per Page (A4); 50 Scans per Minute
Scan Speed	Text, Text/Photo, Photo, B&W only
Scanning Mode	256 levels (error diffusion)
Grayscale	
RADF (Automatic Document Feeder) MR3028	
Original capacity (80g/m ²)	100 sheets, 1000 sheets with continue mode (A4, A3)
Original setting	Face-up
Available original size & weight	A5-R to A3, 35 - 157g/m2 (simplex), 50 - 157g/m2 (duplex)
Dimensions (W x D x H) & weight	575 mm x 528 mm x 135 mm, 12.5kg
Paper Feed Pedestal KD1033	
Paper supply (80g/m ²)	Approx. 550 sheets, 1 drawer
Paper size & weight	A5-R to A3 (64 - 80g/m2)
Dimensions (W x D x H) and weight	727 mm x 716 mm x 450 mm, 21kg
Drawer Module MY1042	
Paper supply (80g/m ²)	Approx. 550 sheets (80g/m2), 1 drawer
Paper size & weight	A5-R to A3 (64 - 80g/m2)
Dimensions (W x D x H) and weight	688 mm x 652 mm x 212 mm, 1.5kg
Job Separator MJ5009	
Capacity (80g/m ²)	Upper Tray: Approx. 150 sheets, Lower Tray: Approx. 250 sheets
Dimensions (W x D x H) & weight	496 mm x 381 mm x 279 mm, 3.3kg
• Platen Cover KA1640PC • Work Tray KK4550 • 2nd Line FaxGD1260F • IPSec Enabler GP1080	
• Data Overwrite Enabler GP1070 • Wireless LAN Adapter GN1060 • Antenna GN3010	
• Meta Scan Enabler GS1010 • Unicode Font Enabler GS1007 • Advanced Scanning Re-Rite 8 GB1280V8	
• Work Tray KK4550 • Desk MH2050 • Accessible Arm KK2550 • Manual Pocket KK1660	
Paper Reusing Device Erasing Unit KH1021 (e-STUDIO RD301)	
Erasing Method	Twin Heat Roller Duplex Heating Method
Scanning Method	Single-pass Duplexing Automatic Document Feeder
Warm-up Time	Approx. 40 seconds (Approx. 12 seconds from Energy Saving Mode)
Dimensions (W x D x H)	470 mm x 470 mm x 825 mm
Weight	Approx. 45kg
Power Consumption	Max. 1.5 kW, Less than 3W Sleep Mode (220-240V)
Operating Environment	Temperature: 10 - 30° C Humidity: 20 - 85 % (No Condensation)
Paper Feed Tray	
Loading Capacity	Max. Stack Height: 15 mm (Approx. 100 sheets; A4 (80g/m2)
Acceptable Paper Size	A4, A5, B5
Acceptable Paper Weight	64 - 80g/m2 (Plain Paper)
Erase (Standard)	
Erase Speed (A4)	Erase only: 30 sheets/minute Erase & Sort/Scan: 15 sheets/minute
Scan (Standard)	
Resolution	100, 150, 200, 300 dpi
Scan/Erasing speed	15/30 sheets/minute
Colour Modes	Full Colour, Grayscale, B&W, Blue Original
File Formats	TIFF, PDF, Slim PDF, JPEG
Scan Functions	Scan to USB, Scan to Network Shared Folder (SMB, WebDAV), Management Scan
Device Management	
TopAccess for Remote Administration and Configuration (Incl. Reuse Count Settings)	

DISTRIBUTED BY

ISO 9001 and ISO 14001 Certifications

These highly acclaimed certifications are recognised worldwide as measures of top quality and environmental management excellence. They are awarded to manufacturers for facilities and practices meeting strict standards set by the Geneva based International Standardization Organisation. To date, four copier sales affiliates and all Toshiba TEC manufacturing facilities where copiers, accessories, supplies and parts are produced have received ISO 9001 certification, while four copier sales affiliate and all Toshiba TEC manufacturing facilities have received ISO 14001 certification — even more reasons to count on Toshiba.

Microsoft and Windows® are registered trademarks of Microsoft Corporation in the United States and/or other countries.
Adobe® PostScript® Level 3™ is a registered trademark of Adobe Systems, Inc.
Mac OS® is a registered trademark of Apple Inc.
All other brand and/or product names are trademarks of their respective owners.

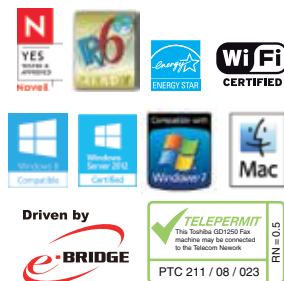
This brochure was compiled based on information that was accurate prior to product launch. Product design and specifications are subject to change without notice. The colour(s) of the actual product may vary from the colour(s) shown in this brochure. No part of this material may be used or reproduced in any manner whatsoever without permission. ²1GB = 1 billion bytes; the actual formatted capacity is less. Available capacity will also be less if software applications are pre-installed. Days for function availability may differ by region. "e-filing" is an abbreviation of "electronic filing". Warm-up time and print speed may vary depending on the operating environment.
©2015 TOSHIBA TEC CORPORATION All rights reserved.

As an ENERGY STAR Partner TOSHIBA TEC CORPORATION has determined that this multifunctional device model meets the ENERGY STAR guidelines for energy efficiency.

TOSHIBA

Leading Innovation >>>

TOSHIBA (AUSTRALIA) PTY LIMITED
ABN 19 001 320 421
 Building C, 12-24 Talavera Road, North Ryde, NSW 2113
 Tel: (02) 9887-6000 Fax: (02) 9815-6274
New Zealand Office
 58 Lunn Avenue, Mt Wellington, Auckland, NZ
 Tel: (9) 570-8530 Fax: (9) 570-8930
www.eid.toshiba.com.au
www.eid.toshiba.co.nz



TOGETHER INFORMATION