

e-STUDIO™ 557/657/757/857

- > Black & White MFP
- > Up to 85 PPM
- > Med/Large Workgroup
- > Copy, Print, Scan, Fax
- > Secure MFP
- > EPEAT Registered*



* e-STUDIO657/757/857 only

TOSHIBA
Leading Innovation >>>

Power, performance and drive.

Toshiba introduces an impressive new lineup capable of performing flawlessly, time after time after time. The new e-STUDIO857 series boasts speeds up to 85 pages per minute using the latest generation e-BRIDGE platform to offer world-class functionality, dependability and productivity.

Go the distance, and then some.

Step up to the e-STUDIO857 series, take a look at the easy-to-navigate, 9" color touch screen, and you'll be impressed right away. Add to that a first copy out time under 3.5 seconds and speeds from 55 to 85 crisp pages per minute at a precise 2,400 x 600 dpi that keeps going for up to 600,000 copies per month, 7,600 sheets at a time. Change toner on the fly, and print on the go. You name it. You're sure to find it here.

The central hub.

Outstanding image quality at breakneck speeds and extra high volume are perfect for growing companies and large workgroups. It is literally the central hub of all that is document related – the ultimate in storage, management and production with total network connectivity. Need help? Just push a button and you have instant access to context sensitive help straight from the user's manual.



Innovative technology for your entire network.

The new e-STUDIO857 series is versatile, capable, reliable and downright phenomenal. If you've never used a machine of this caliber, you'll be amazed at what a difference it can make in the way you do business.

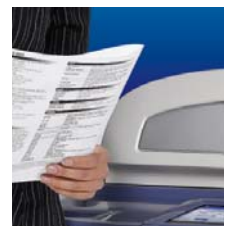
Brilliant innovations made easy.

Toshiba's latest e-BRIDGE technology makes it easy to integrate business applications, multiple devices and vendor solutions. Periodic maintenance is made simple, too, thanks to an innovative service module design that allows modules to quickly and easily be removed, serviced and replaced as needed. You can also administer the entire fleet from a single location and govern access to information and functionality wherever necessary. Advanced technology is more accessible than ever.

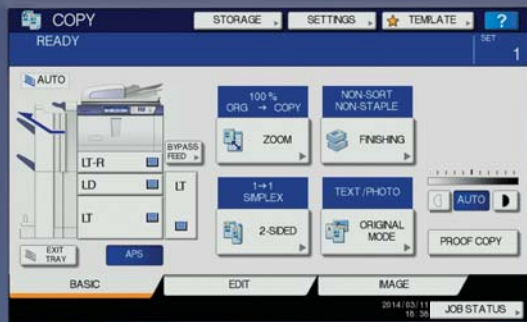
An abundance of impressive options.

Choose from several finishers according to your document usage. The e-STUDIO857 series is available with a 50-Sheet Finisher, a 50-Sheet Finisher with Saddle-Stitch or a 100-Sheet Finisher with Saddle-Stitch. Select a 2/3-Hole Punch or Post Inserter and add pre-printed covers or inserts for precise, consistent and professional looking documents. Whether you want to impress employees or win over new clients, the e-STUDIO857 series has what it takes.

- > Superb Image Quality
- > e-BRIDGE Technology
- > Universal Print Driver
- > Fast First Copy Out Times
- > Up to 7,600 Capacity
- > Service Module Design
- > Saddle-Stitch Finisher
- > 2/3-Hole Punch
- > Post Inserter



High quality output, page after page, combined with finishing options help you create professional looking documents with ease.



Features and benefits galore.

Here's what Toshiba's e-STUDIO857 series has to offer. You couldn't ask for more.



Pacesetting printing

Choose your speed, from 55 to 85 pages per minute. First copy out times are under 3.5 seconds for the e-STUDIO757/857 and under 4 seconds for the e-STUDIO557/657.



Reliable performance

Maximise uptime and productivity with the ability to change toner on the fly coupled with a toner yield that keeps pace with the demands of heavy office use.



Broad paper handling

Take advantage of a maximum 7,600-sheet paper capacity and use up to 110 lb index from the drawers and 140 lb pre-printed cover stock from the inserter.



Most advanced e-BRIDGE platform

This proprietary platform allows for improved connectivity, security and fleet management. Also, you can access third-party solutions such as PaperCut, Docuware and others – right from the front panel.



Versatile connectivity and functionality

Includes PCL6, PostScript3, and XPS as well as a Universal Printer Driver, which means you only need one driver across the entire line. Driver plug-ins enable increased functionality.



Easy to use

Scan or print directly using a USB port. A large 9" touch screen panel is easy to read and intuitive. Also, a context sensitive help button will give you added instructions as needed.



Innovative technology

Use Card Reader Support to control, cap, and accurately account for usage. Other leading innovations include Gigabit Ethernet support, e-filing for frequently reprinted jobs and an automatic OCR option for expert scanning.



Advanced finishing options

Choose from the 50-Sheet Finisher, a 50-Sheet Finisher with Saddle-Stitch or a 100-Sheet Finisher with Saddle-Stitch, not to mention 2/3-Hole Punch and Post Inserter options.



Top security

A 320GB Self-Encrypting Drive (SED) with Data Overwrite are standard. Hard Copy Security and IPsec are available as options.



Environmentally friendly

The e-STUDIO857 series is RoHS Compliant, Energy Star Tier 2 rated and EPEAT Registered* (as part of the definitive global registry for greener electronics).

e-STUDIO™ 557/657/757/857

* e-STUDIO657/757/857 only

Safety, security and environmental responsibility.

The increasing demands of data security and environmental safety are continually being met, and exceeded, here at Toshiba. That's because we have been ahead of the curve with regard to impending concerns and have continually applied innovative technology in order to address them.



The security of leading technology.

There is no such thing as being too careful when it comes to the security of your data and your business. That's why we've incorporated safeguards such as a new 320GB Self-Encrypting Drive (SED) with Data Overwrite. In addition, there is an IPsec option to encrypt data being sent to or from the MFP, as well as Hard Copy Security that's available to prevent the copying of sensitive documents.

Safer, smarter and greener.

As a company, we continue to invent ways in which we can reduce the environmental impact of our manufacturing processes and our products themselves. The Toshiba e-STUDIO857 series has a low power sleep mode that meets the stringent requirements of Energy Star Tier 2. It is also RoHS compliant, and even uses recycled plastics. Because of this and other eco-friendly features, the Toshiba e-STUDIO857 series is EPEAT Registered* in the greener electronics global registry developed to help purchasers choose products that reduce environmental impact. All combined, it's Toshiba's leading innovation at its greenest.



* e-STUDIO657/757/857 only

Specifications

General	
Copying Process	Indirect electrostatic photographic method
Copying Type	Laser beam printing (Memory copy standard)
Copy/Print Resolution	Scanning: 600 dpi x 600 dpi Printing: 2,400 x 600 dpi with smoothing
Copy/Print Speed	e-STUDIO557: 55 cpm/ppm e-STUDIO657: 65 cpm/ppm e-STUDIO757: 75 cpm/ppm e-STUDIO857: 85 cpm/ppm
Max. Paper Capacity	7,600 sheets (80g/m ² , with optional external LCF)
- Standard (3,600 sheets)	Drawer (500 sheets) x 2, Tandem LCF (2,500 sheets), Stack Feed Bypass (100 sheets)
- Optional	External LCF (4,000 sheets)
Max./Min. Paper Size	Drawer: A3/A5-R Tandem LCF: A4 Stack Feed Bypass: A3/A5-R Optional external LCF: A4
Paper Weight	Drawer: 64 - 209 g/m ² Tandem LCF: 64 - 209 g/m ² Stack Feed Bypass (Multi-feed): 64 - 209 g/m ² Optional external LCF: 64 - 209 g/m ²
Hard Disk Drive/Memory	HDD: 320GB ¹ Self Encrypting Drive (SED)
Warm-Up Time	Approx. 130 seconds
First Copy Out Time	e-STUDIO557/657: approx. 4.0 seconds e-STUDIO757/857: approx. 3.5 seconds
Duplex	Standard
RADF	100 sheets (2000 sheets with continue mode)
Reduction/enlargement	25% to 400%, 25% to 200% (RADF)
Power Consumption	Max. 2.0kW (220-240V), Super Sleep Mode less than 1W
Dimensions	W698 x D789 x H1,176mm
Weight	Approx. 203kg
Printer/Scanner Kit	GM-2250
External Interface Enabler	GS-1020

Print Specifications	
Interface	Ethernet (10/100/1000BASE-T), USB 2.0/Hi Speed USB, Wireless LAN (option)
Printer Language	PCL5e, PCL6, PostScript3, PDF (emulation), XPS
Protocols	TCP/IP, IPX/SPX, NetBIOS, AppleTalk, EtherTalk, LPR/LPD, IPP, Port 9100, WSPrint, FTP
Drivers	Windows Server 2003/2008 (32/64 bit), Windows Vista (32/64 bit), Windows 7/8 (32/64 bit), Windows OS Terminal Edition, Citrix MetaFrame, UNIX, Linux, Solaris, HP-UX, SCO, AIX, CUPS, SAP [®] R3, AS400 (WCO), MacOS10.2.8, 10.3.9, 10.4.11, 10.5.7, 10.6.8, 10.7 and 10.8

Scan Specifications	
Scan Resolution	100 dpi, 150 dpi, 200 dpi, 300 dpi, 400 dpi, 600 dpi
Scan Speed: Black & White:	80 spm (300 dpi), 71 spm (400dpi), 66 spm (600 dpi)
Scan Speed: Colour:	77 spm (300dpi), 48 spm (400dpi), 23 spm (600dpi)
File Format	TIFF, PDF, XPS, Slim PDF, Secure PDF, JPEG

Fax Specifications	
Compatibility	Super G3, G3
Modem Speed	Max. 33.6kbps
Data Compression Method	JBIG, MMR, MR, MH
Transmission Speed	Approx. 3 seconds per page
Memory Transmission	Max. 100 jobs 2,000 destinations, 400 destinations/job, Max. 1000 pages/file
Scan Speed	0.7 seconds per page (A4)
Desktop Fax	Windows Server 2003/2008 (32/64 bit), Windows Vista (32/64 bit), Windows 7/8 (32/64 bit), MacOS10.4 or later
Fax Routing	Network Folder, Email, Searchable* * with option

Distributed by

e-Filing Specifications	
Operation Method	Colour touch control panel or client PC
Number of Boxes	1 public box, 200 private user boxes
Capacity of Boxes	100 folders per box, 400 documents per folder, 200 pages per document

Options	
Finisher MJ-1027 (console type)	
- Tray Capacity	1st bin : Approx. 2,000 sheets (A4/B5), approx. 1,000 sheets (A4-R/B4/A3) 2nd bin : Approx. 2,000 sheets (A4/B5), approx. 1,000 sheets (A4-R/B4/A3)
- Staple Capacity	50 sheets (A4/B5), 30 sheets (A4-R/B4/A3)
Finisher MJ-1028 (console type)	
- Tray Capacity	1st bin : Approx. 2,000 sheets (A4/B5), approx. 1,000 sheets (A4-R/B4/A3) 2nd bin : Approx. 2,000 sheets (A4/B5), approx. 1,000 sheets (A4-R/B4/A3)
- Staple Capacity	50 sheets (A4/B5), 30 sheets (A4-R/B4/A3)
- Saddle stitch	
- Paper size	A3, B4, A4-R
- Staple capacity	15 sheets
- Stack capacity	11 - 15 sheets copy : 10 sets 6 - 10 sheets copy : 20 sets less than 6 sheets : 25 sets
Finisher MJ-1029 (console type)	
- Tray Capacity	1st bin : Approx. 2,000 sheets (A4/B5), approx. 1,000 sheets (A4-R/B4/A3) 2nd bin : Approx. 2,000 sheets (A4/B5), approx. 1,000 sheets (A4-R/B4/A3)
- Staple Capacity	100 sheets, 50 sheets (A4-R/B4/A3)
- Saddle stitch	
- Paper size	A3, B4, A4-R
- Staple capacity	15 sheets
- Stack capacity	11 - 15 sheets copy : 10 sets 6 - 10 sheets copy : 20 sets less than 6 sheets : 25 sets
Hole Punch Unit MJ-6003	for MJ-1027, MJ-1028, MJ-1029
Insert Unit MJ-7001	100 sheets
Large Capacity Feeder	
MP-4004A4	4,000 sheets Drawer, A4
Staple Cartridge	STAPLE-600, STAPLE-700, STAPLE-1700, STAPLE-1800, STAPLE-1900
Finisher Guide Rail KN-1017	
Fax Unit GD-1250	
2nd Line for Fax Unit	
GD-1260	
Wireless LAN Module GN-1060	
Antenna for Wireless LAN Module GN-3010	
Data Overwrite Enabler GP-1070	
Meta Scan Enabler GS-1010	
IPsec Enabler GP-1080	
Harness Kit for Coin Controller GQ-1040	
e-BRIDGE ID Gate KP-2004 (HID), KP-2005 (Mifare)	
e-BRIDGE Re-Rite GB-1280v8	

Microsoft and Windows[®] are registered trademarks of Microsoft Corporation in the United States and/or other countries.
Adobe[®] PostScript[™] Level 3[™] is a registered trademark of Adobe Systems, Inc.
Mac OS[®] is a registered trademark of Apple Inc. AirPrint and the AirPrint logo are trademarks of Apple Inc.
All other brand and/or product names are trademarks of their respective owners.

All specifications relevant to paper capacity, productivity and others relating to paper refer to A4 size paper of 80g/m² quality if not otherwise mentioned.
This brochure was compiled based on information that was accurate prior to product launch. Product design and specifications are subject to change without notice. The colour(s) of the actual product may vary from the colour(s) shown in this brochure. No part of this material may be used or reproduced in any manner whatsoever without permission.
¹ 1GB = 1 billion bytes; the actual formatted capacity is less. Available capacity will also be less if software applications are pre-installed. Days for function availability may differ by region. "e-filing" is an abbreviation of "electronic filing". Warm-up time and print speed may vary depending on the operating environment. ©2014 TOSHIBA TEC CORPORATION All rights reserved.

As an ENERGY STAR Partner TOSHIBA TEC CORPORATION has determined that this multifunctional device model meets the ENERGY STAR guidelines for energy efficiency. *This is a Class 1 laser product complying with IEC60825-1.

TOSHIBA Leading Innovation >>>

TOSHIBA (AUSTRALIA) PTY LIMITED
ABN 19 001 320 421
 Building C, 12-24 Talavera Road, North Ryde, NSW 2113
 Tel: (02) 9887-6000 Fax: (02) 9815-6274
New Zealand Office
 58 Lunn Avenue, Mt Wellington, Auckland, NZ
 Tel: (9) 570-8530 Fax: (9) 570-8930
www.eid.toshiba.com.au
www.eid.toshiba.co.nz

